



Marylebone Place, Leicester, LE2 7LS

Asking price £67,500

Leasehold

Taylors
Est. 1992

25% Shared Ownership
Two Double Bedrooms
Main Bathroom
Living Room
Kitchen Diner
Large Garden - High Privacy
Parking for Two Vehicles
Popular Area - Close to King Power Stadium
Can buy up to 100% share or Min 25%

Shared Ownership Information

Entrance Hall

Living Room 14'5 x 11'2 (4.39m x 3.40m)

Kitchen Diner 13'1 x 11'2 (3.99m x 3.40m)

Downstairs WC

Utility Closet

Stairs and Landing

Bedroom One 14'9 x 11'6 (4.50m x 3.51m)

Bedroom Two 14'9 x 10'10 (4.50m x 3.30m)

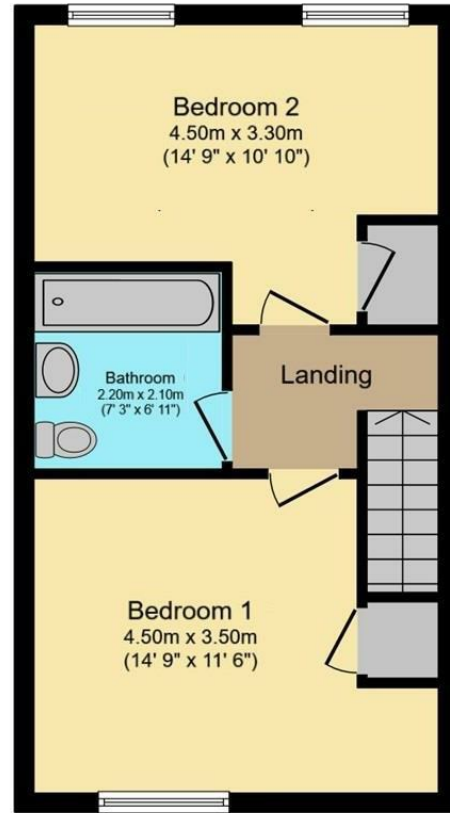
Main Bathroom



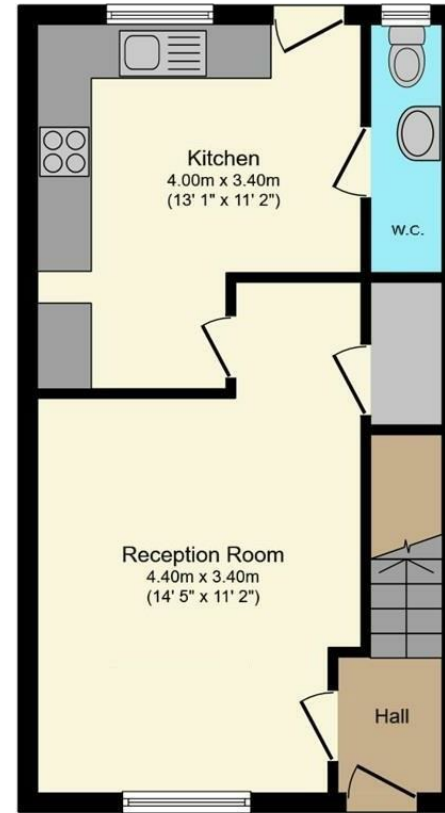
25% Shared Ownership | Two
Double Bedrooms | Living Room |
Kitchen Diner | Downstairs WC |
Main Bathroom | Large Garden |
Off Road Parking for Two Vehicles







Ground Floor
Floor area 38.5 m² (414 sq.ft.)



First Floor
Floor area 38.4 m² (414 sq.ft.)

TOTAL: 76.9 m² (828 sq.ft.)

This floor plan is for illustrative purposes only. It is not drawn to scale. Any measurements, floor areas (including any total floor area), openings and orientations are approximate. No details are guaranteed, they cannot be relied upon for any purpose and do not form any part of any agreement. No liability is taken for any error, omission or misstatement. A party must rely upon its own inspection(s). Powered by www.Propertybox.io

Taylors 1992 Ltd
6 Grove Court, Grove Business Park, Enderby, LE19 1SA
T: 0116 326 6464
E: hello@taylorsestate.agency

Agents Note: Whilst every care has been taken to prepare these sales particulars, they are for guidance purposes only. All measurements are approximate are for general guidance purposes only and whilst every care has been taken to ensure their accuracy, they should not be relied upon and potential buyers are advised to recheck the measurements.

Taylors
Est. 1992